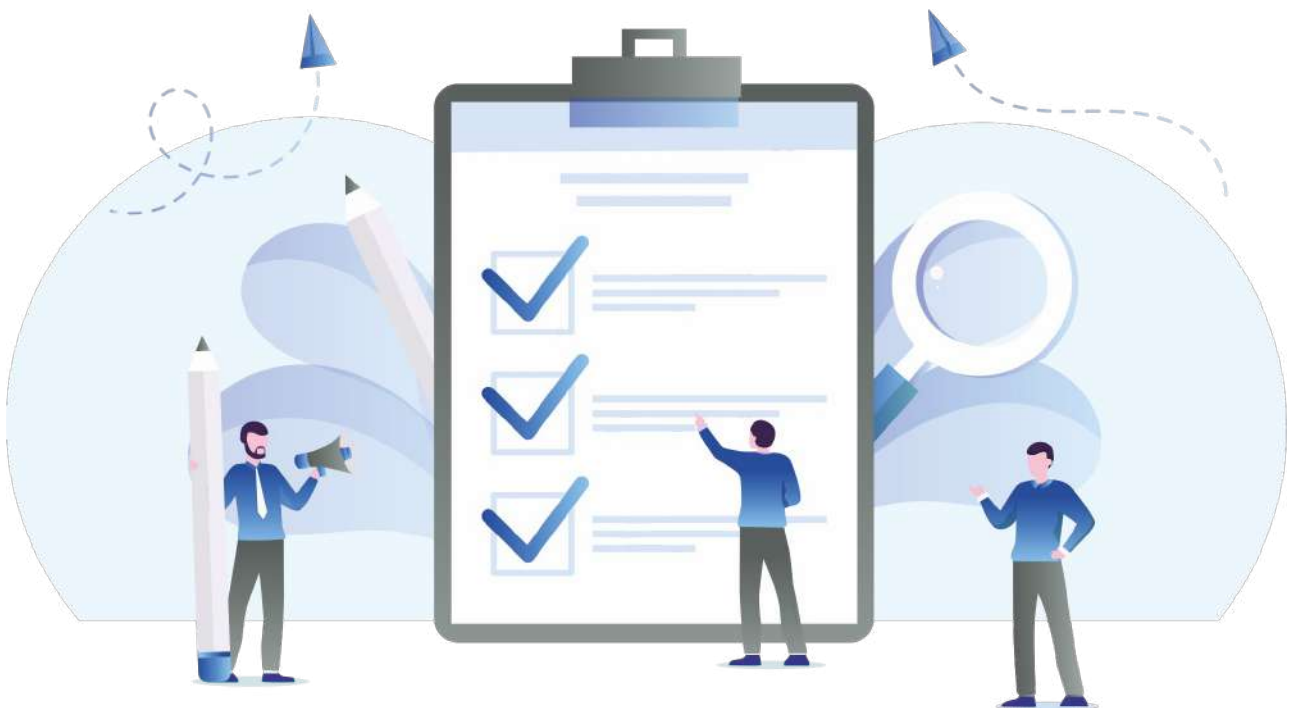





Visa Documents Checklist

eVisitor (subclass 651)



Pathway Education & Visa Services

 suit 5.14, Level 5
365 Little Collins St,
MELBOURNE, VICTORIA - 3000, AUSTRALIA

 0401561481

 info@pathwayeducation.com.au

 www.pathwayeducation.com.au

Applicant's Personal Details

> Passport

 Required  Original

You must be a citizen of and hold a valid passport from one of these countries to be eligible for the eVisitor: • Austria • Belgium • Bulgaria • Croatia • Cyprus • Czech Republic • Denmark • Estonia • Finland • France • Germany • Greece • Hungary • Iceland • Ireland • Italy • Latvia • Liechtenstein • Lithuania • Luxembourg • Malta • Monaco • The Netherlands • Norway • Poland • Portugal • Romania • Republic of San Marino • Slovak Republic • Slovenia • Spain • Sweden • Switzerland • United Kingdom – British Citizen • Vatican City You cannot apply with: • a non-citizen passport, certificate of identity or other travel document • a British National Overseas, British Dependent Territories Citizen, British Overseas Citizen, British Protected Person or British Subject passport

Character Documents

> Overseas Police Clearance Certificate

 Recommend  Original

You may be required to provide a police certificate (also called a penal clearance certificate) from every country you lived in. It will usually be if you are over 17 and lived in any of the listed countries, including Australia, for at least 12 months in the past 10 years. Police certificates are valid for 12 months from the issue date. They must cover: • the time you turned 16 up to the issue date OR • the whole time you were in the country

> Military Certificate

 Recommend  Original

You may need to provide a military certificate with your visa application. If required, it will usually be when you served for more than 12 months in any country's military force. A military certificate can be a letter from your commanding officer. It should say you have not been convicted of any criminal offence while in the military. You may also need to provide a police certificate for every country you served in for over 12 months. This includes where you were stationed at a military base.

Disclaimer: The information contained in this document is provided for informational purposes only, and should not be construed as legal advice on any subject matter.